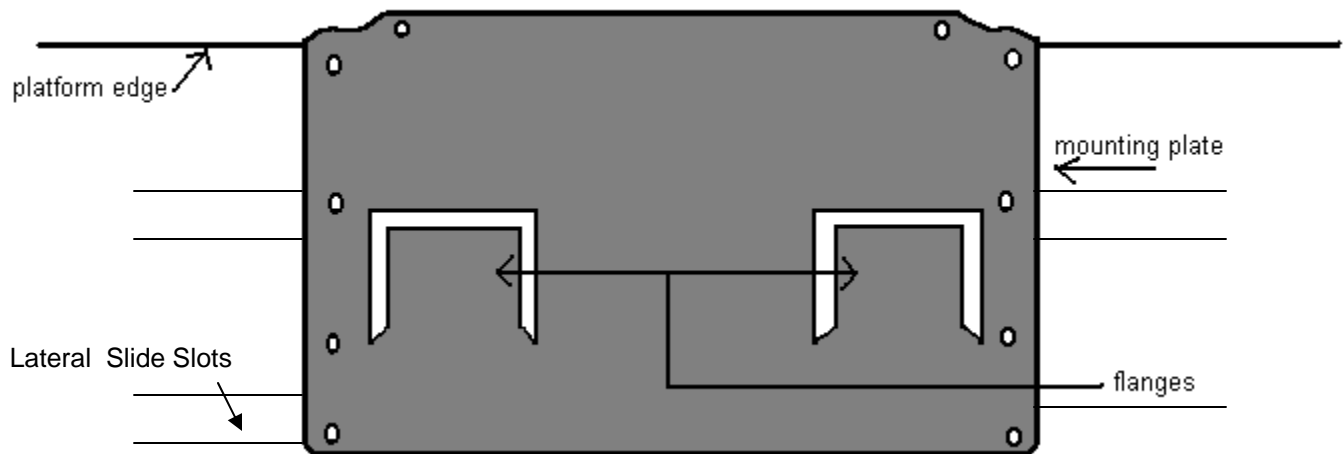




**Installation Instructions**  
**23500 Click!t with Mounting Plate and Lateral Slide Platforms**



**To attach the mounting plate to the 23500 Click!t Arm:**

1. Slip the slots on the Click!t Arm into the flanges of the mounting plate.
2. The two protruding holes on the bracket will line up with the corresponding holes in the keyboard arm. Use two machine screws with nylon nut to secure.

See **Lateral Slide Assembly Instructions** to attach Click!t Arm with mounting plate to *Lateral Slide* Keyboard Platform.

For further questions, please call Grand Stands, Inc. **800-831-2150**