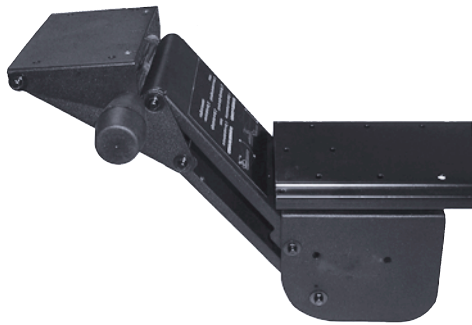


Sit - Stand Series

Use these arms when height adjustment above the work surface is required. The Click!t and Mongoose Arms offer Lift & Lock height adjustment.



Click!t Arm

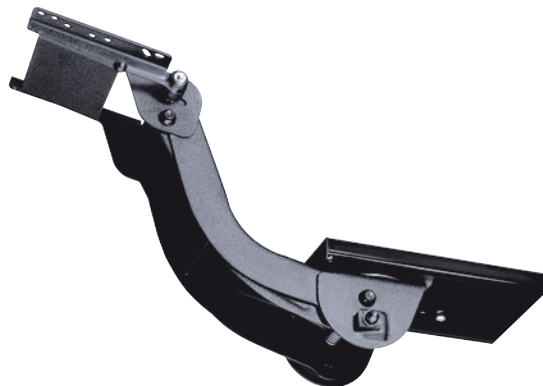
23500 Click!t Arm

This spring assisted arm gives maximum stability for any platform. It features 11 1/2" of knobless height adjustment, 4" above the mounting surface. There is a knob for tilt release, 10° positive and 10° negative. This arm has a 360° swivel and is retractable on a 21" glide track.

Mongoose Arm

23800 Mongoose Arm

This arm is spring assisted with 11 1/2" of knobless height adjustment, 7" above the mounting surface. There is a handle for tilt release, 10° positive, 15° negative. This arm features a 360° swivel and is retractable on a 23" glide track.



Dual-Lift Arm

23900 Dual Lift Arm

This arm is used for greater stability on extra wide or extra heavy keyboard surfaces. A front mounted paddle offers 13 1/2" height adjustment - 7" up and 6 1/2" down. A knob can be used for tilt adjustment of 15° + / - . The standard width of this arm is 27". Custom widths and extended height range are available for an upcharge. This is a non-retractable arm.

ur Work Station Application

Preferred type of tilt adjustment - knob, lever, dial -tilt

- The type of adjustment depends on user preference
- See arm descriptions for available options
- For positive or negative tilt parameters, see descriptions

Corner Cut-out work surface

- We recommend non-swivel arms for corner cut-outs to eliminate the "pinch" factor
- On keyboard cut-outs wider than 27" use the Dual-Lift Arm for extra stability
- For more information regarding work surface cut-outs, please call or refer to our *Space Efficiency Page*

