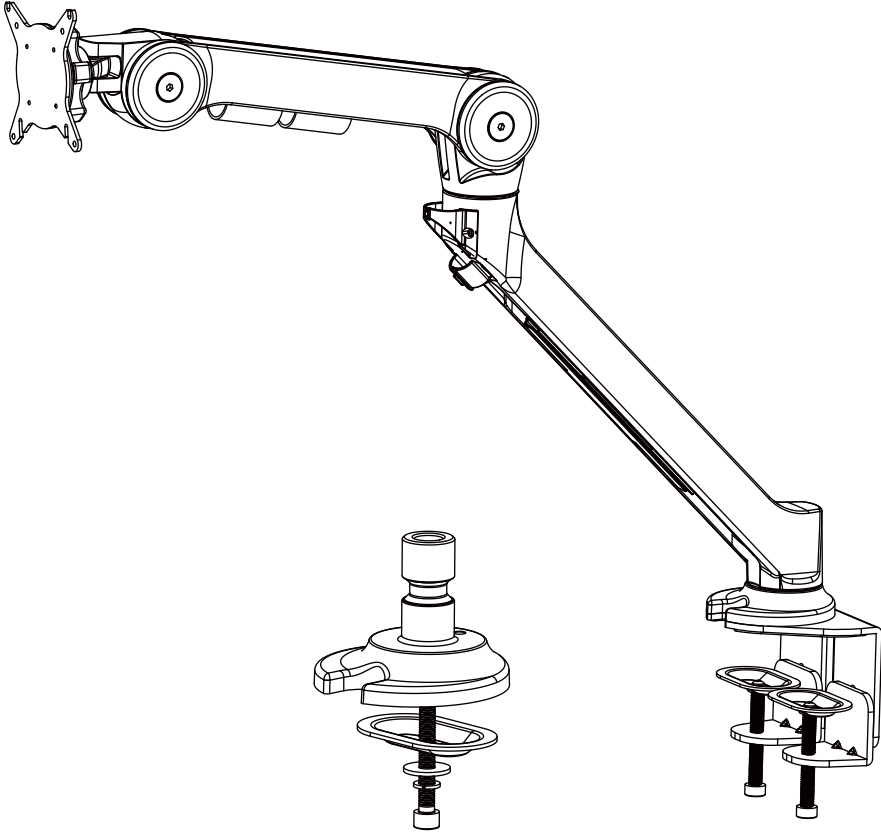


ACE-20 MONITOR ARM



Please Note!

Please pay careful attention to all instructions for mounting and adjusting the 5 friction joints:

Height Control

Tilt Control

Rear Pivot

Center Pivot

Front Pivot

The ACE monitor arm can support monitors, tablets, writing trays, virtually anything that needs 3D adjustability across a wide range of space.



Grand Stands

Ergonomic Workstation Solutions

1946 S. Myrtle Ave, Suite B

Monrovia, CA 91016

+1-626-294-1777 Phone

customerservice@grandstands.com

www.grandstands.com

Specifications

Maximum Extension From Post: 27.56"

Depth from Post (Closed): 0"

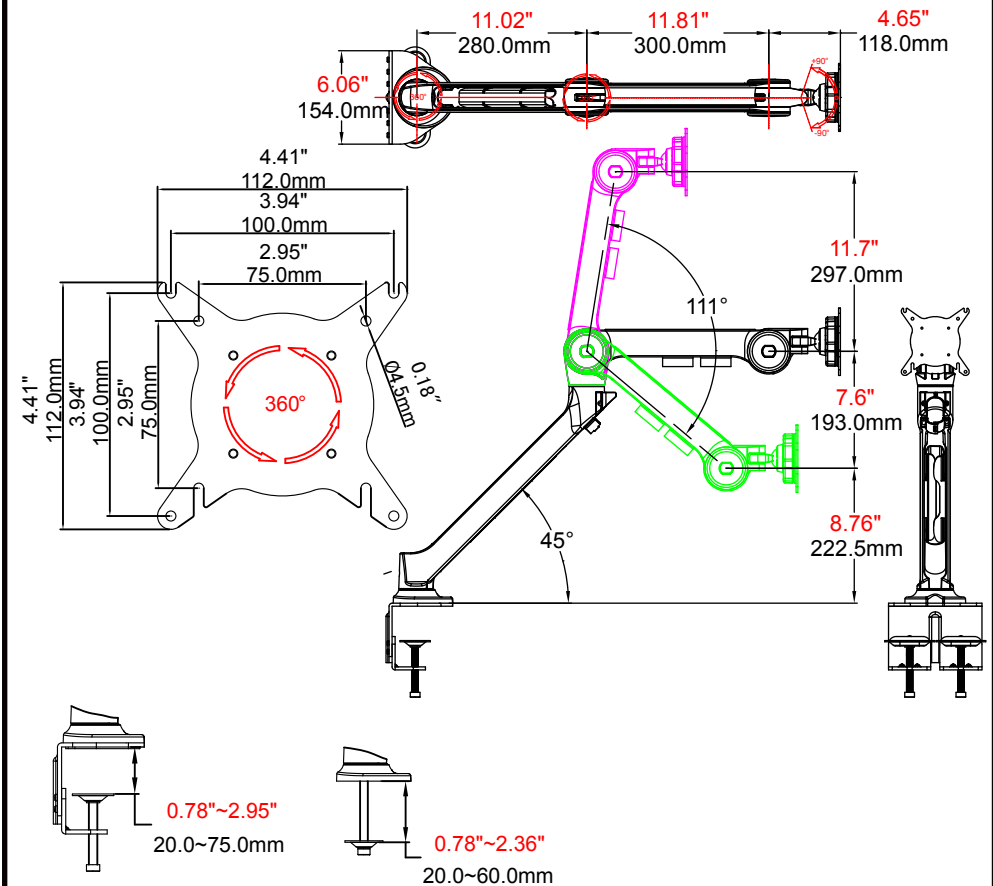
Tilt adjustment: $\pm 15^\circ$

Display Pan Swing - Side to Side: 180°

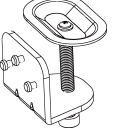
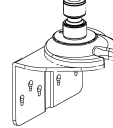
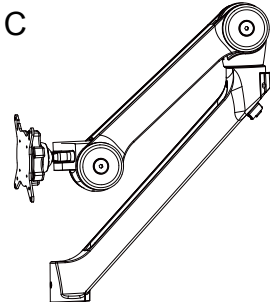




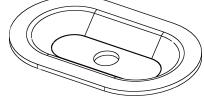
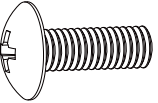
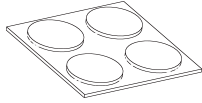





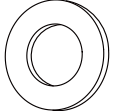

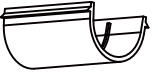
VESA Compatibility: 75x75mm/100x100mm

Height Range : 20"

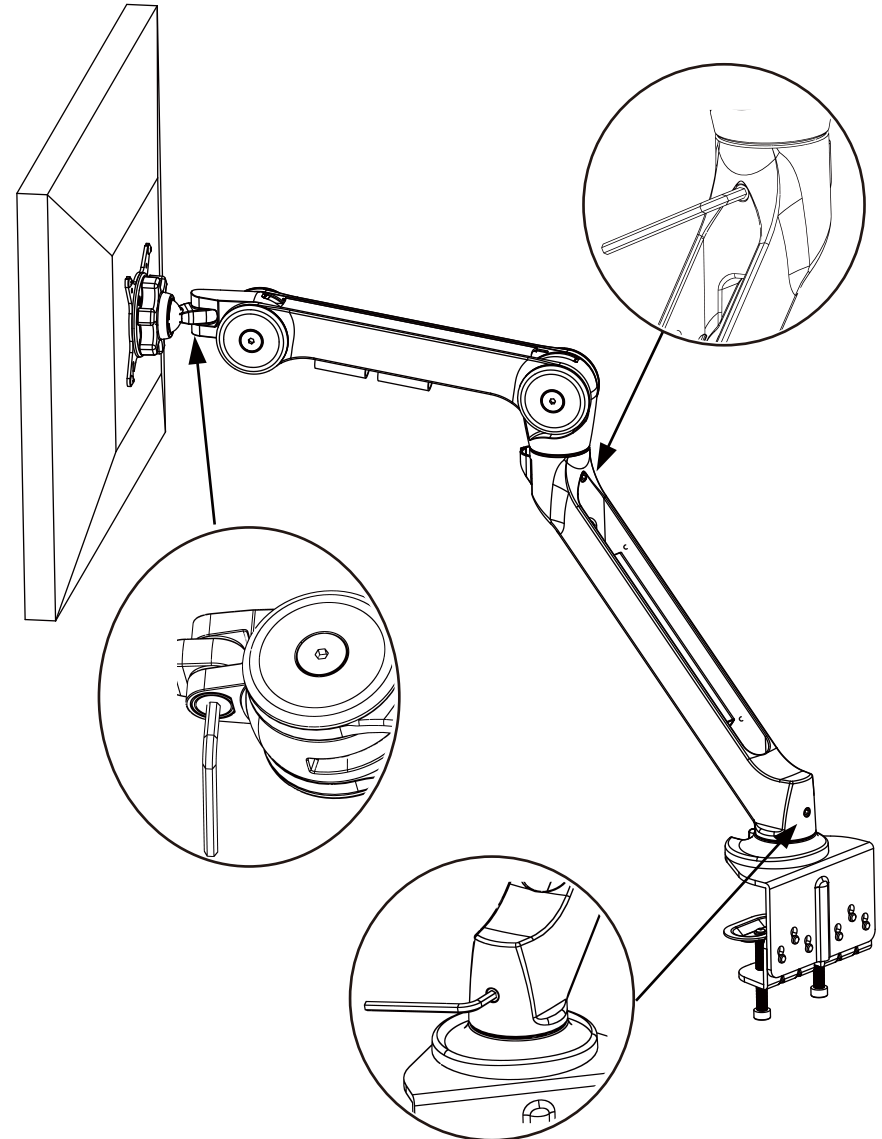
Weight Capacity : ACE-20 0 – 30LB



Supplied Parts

<p>A</p>  <p>Clamp Lower Section Qty:2</p>	<p>B</p>  <p>Clamp Upper Section Qty:1</p>	<p>C</p>  <p>Monitor Arm Qty:1</p>
<p>Q</p>  <p>Anti-skid Pad Qty:1</p>	<p>E</p>  <p>Washer Qty:1</p>	
<p>R</p>  <p>Grommet Mount Bolt Qty:1</p>	<p>H</p>  <p>Rear Rotation 180° Stop Pin Qty:1</p>	<p>U</p>  <p>Swivel Plate Qty:1</p>
<p>G</p>  <p>Monitor Mounting Screw Qty:4</p>	<p>D</p>  <p>Anti-Skid Pads, Grommet Mount Qty:4</p>	<p>O</p>  <p>Hex Wrench 4 mm Qty:1</p>
<p>P</p>  <p>Hex Wrench 5 mm Qty:1</p>	<p>N</p>  <p>Hex Wrench 6 mm Qty:1</p>	<p>M</p>  <p>Hex Wrench 8 mm Qty:1</p>
<p>S</p>  <p>Grommet spring washer Qty:1</p>	<p>T</p>  <p>Grommet flat washer Qty:1</p>	<p>X</p>  <p>Static arm cable guide Qty:1</p>
<p>Z</p>  <p>Adjustable arm cable guides Qty:2</p>		

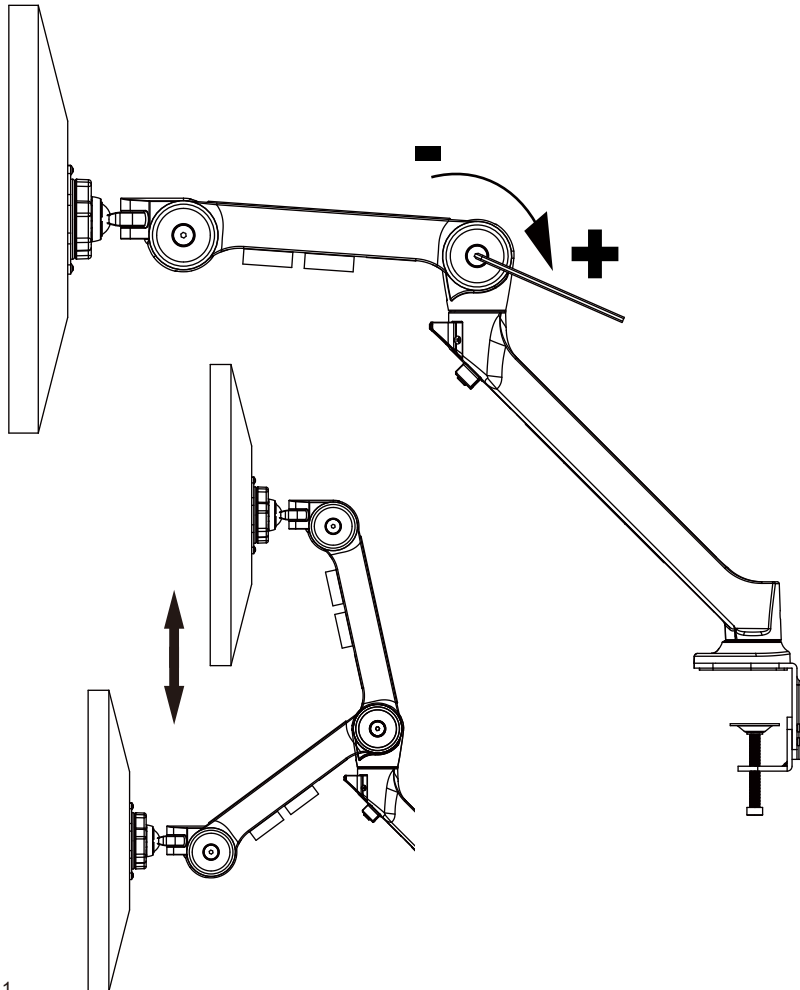
Step 9: Swivel Friction Adjustment's For Horizontal Rotation



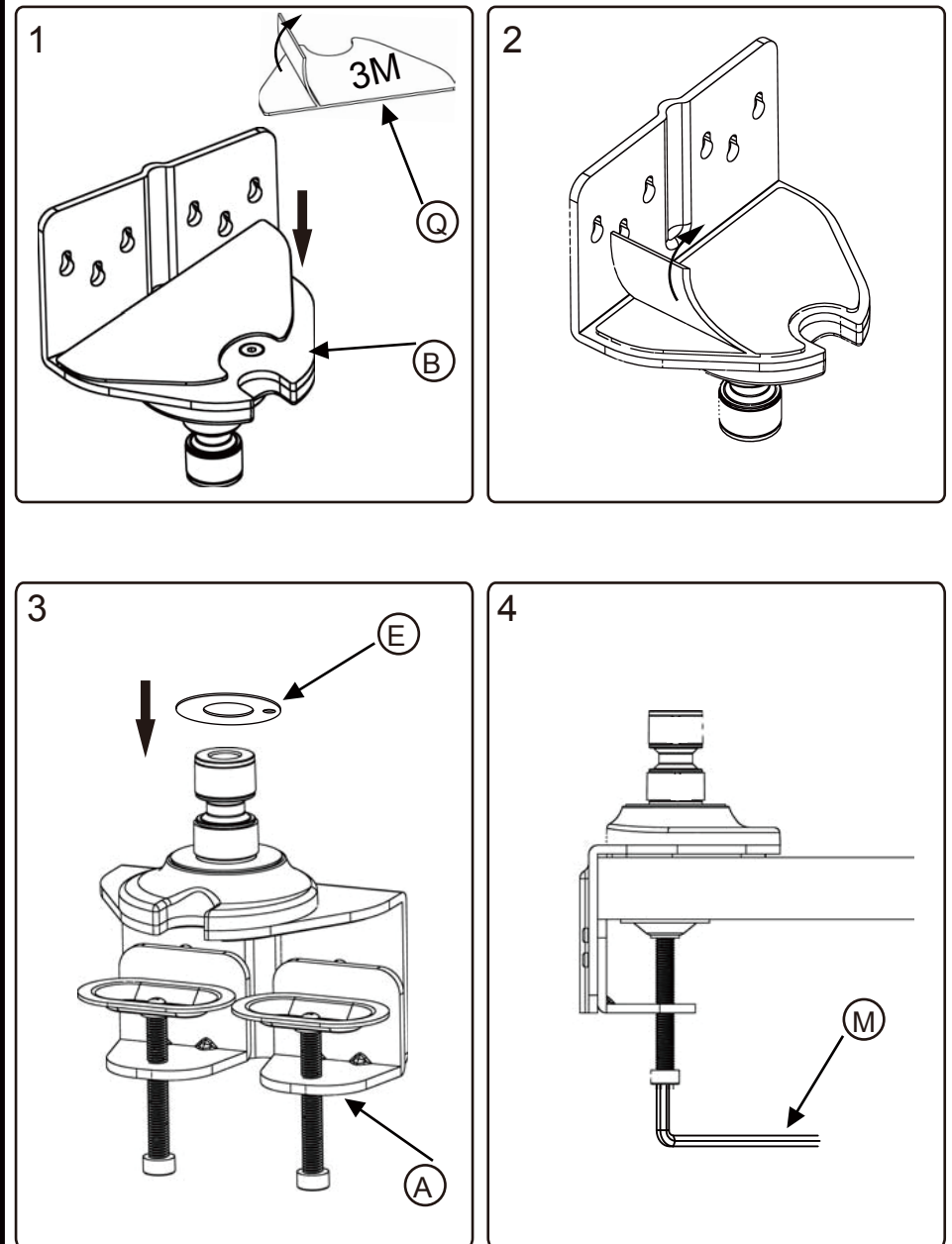
Step 8: Monitor Weight Friction Adjustment

The ACE monitor arm uses a novel one-way friction device to hold the weight of the monitor(s). To set the ideal amount of friction, mount your monitor to arm and raise the arm to horizontal (parallel to desk). If the monitor does not hold height, increase friction by turning bolt clockwise until arm holds monitor when horizontal. Do not over-tighten bolt; too much friction will result in an unnecessary amount of force required to lower the monitor.

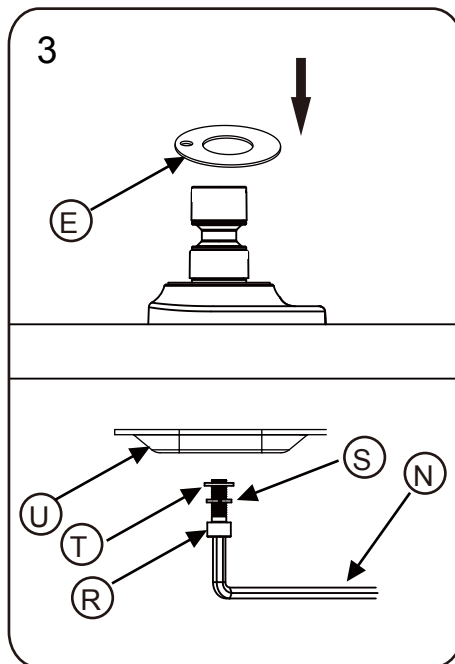
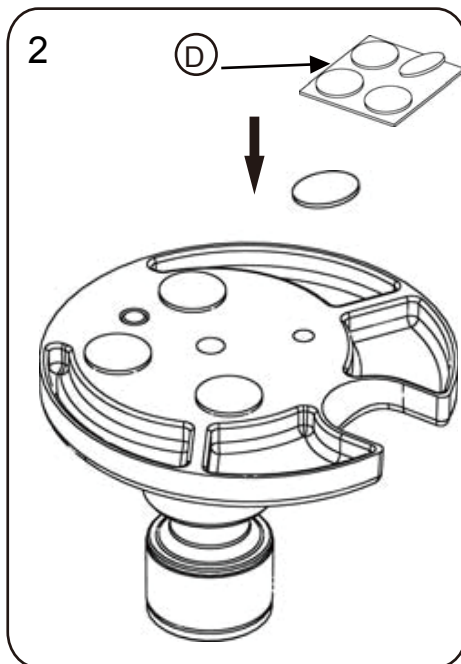
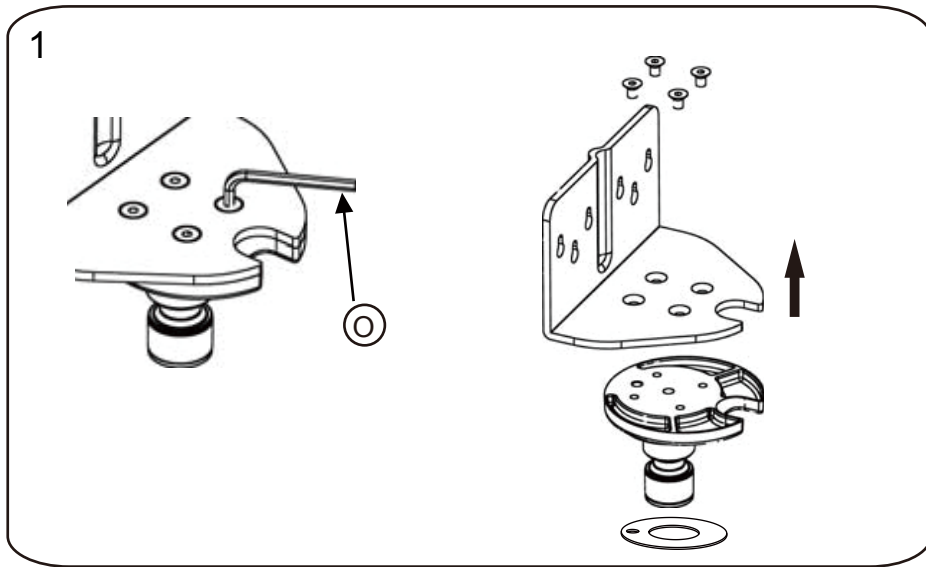
! TO PREVENT FAILURE OF ARM, DO NOT TURN FRICTION ADJUSTMENT BOLT MORE THAN ONE (1) FULL TURN COUNTERCLOCKWISE



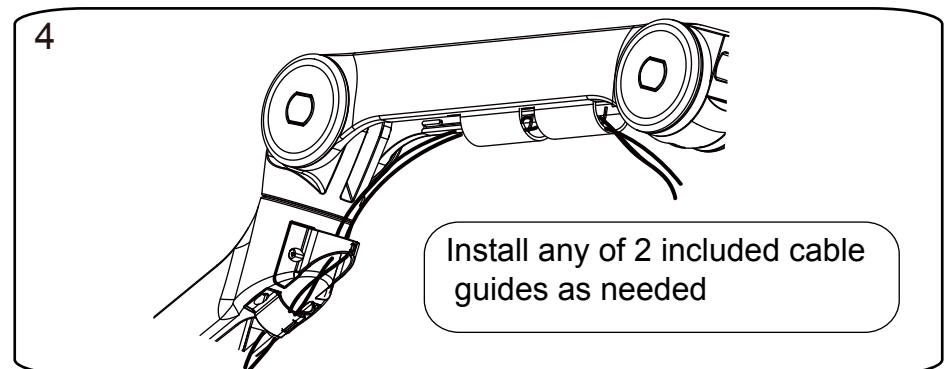
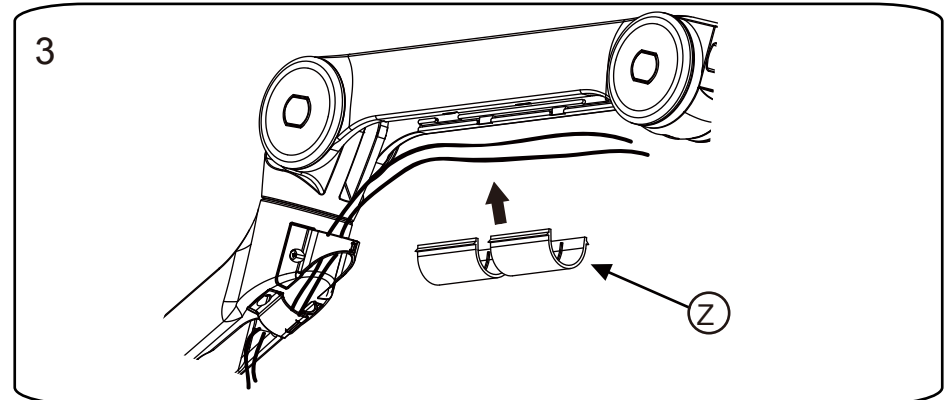
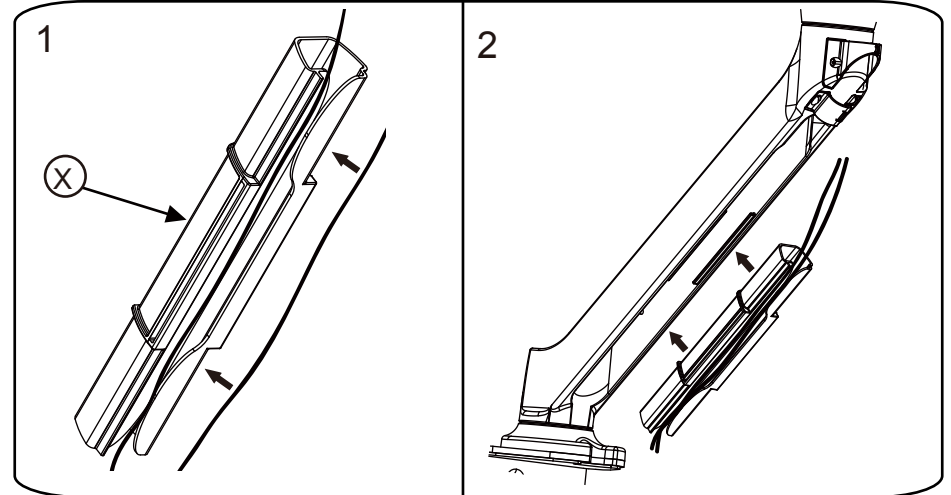
Step 1: Clamp Mount (Option A)



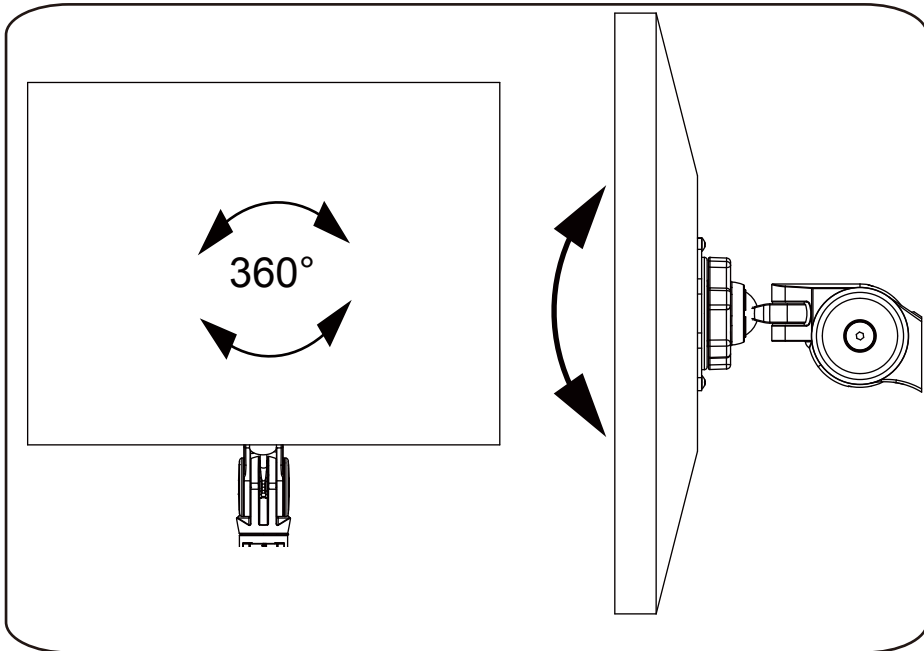
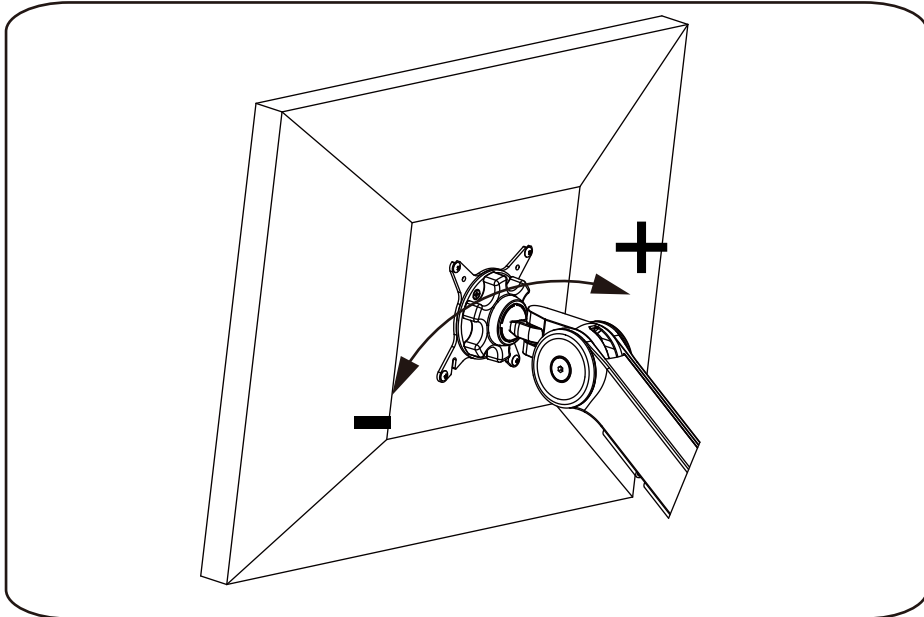
Step 1: Grommet Mount (Option B)



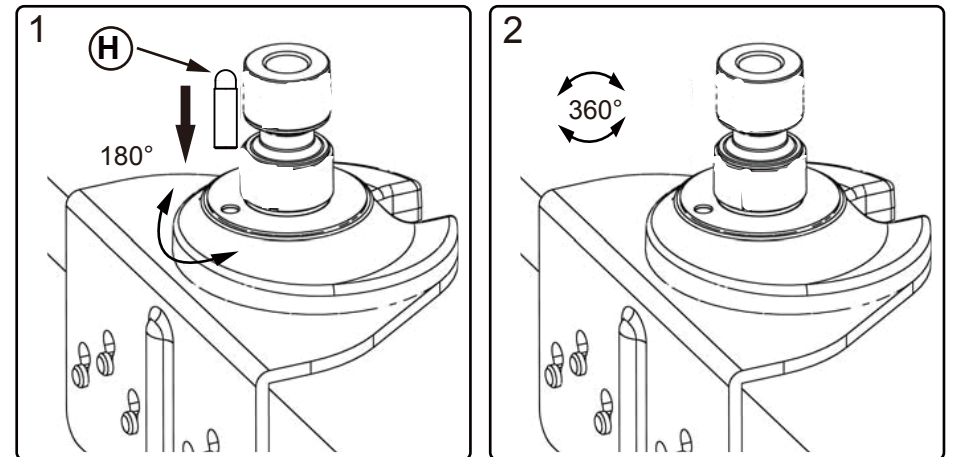
Step 7: Cable & Cable Guide Management



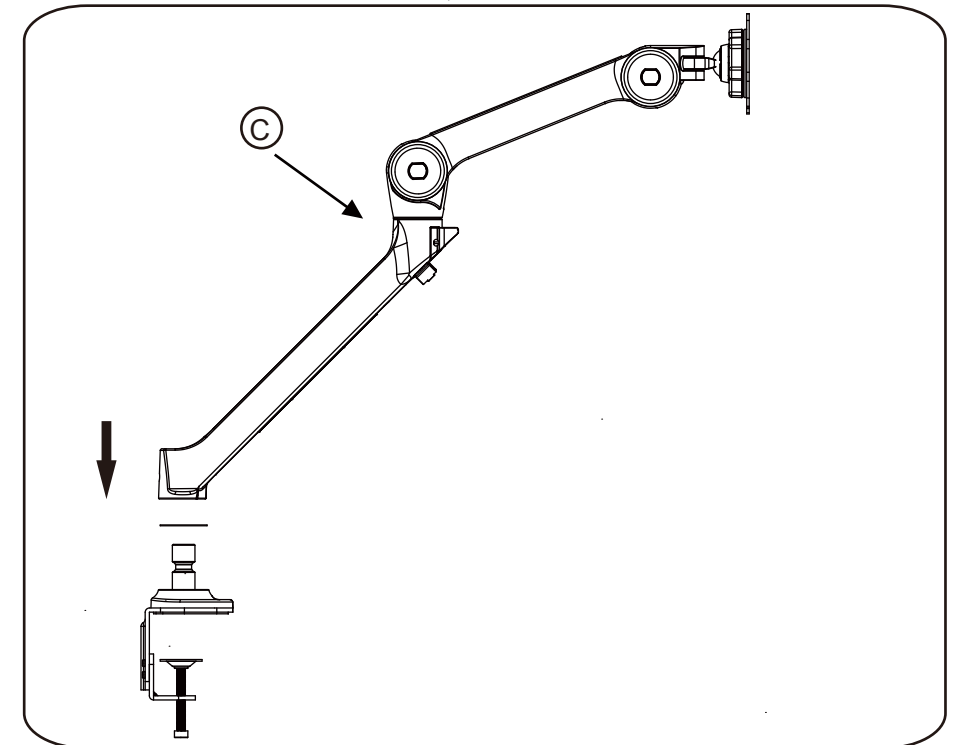
Step 6: Tilt Friction Adjustment



Step 2: Choose 180° or 360° stop at Rear Pivot

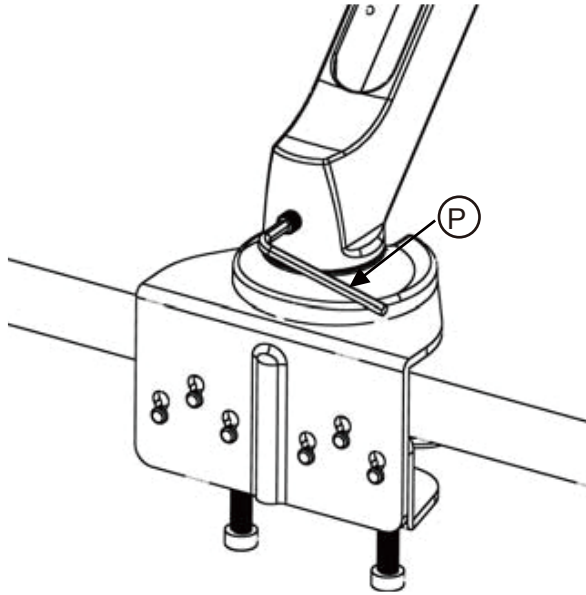


Step 3: Insert Monitor Arm To Base Post

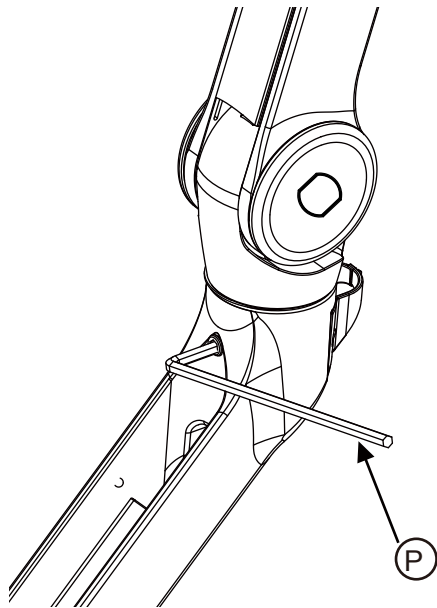


Step 4: Swiveling Friction Adjustment

1

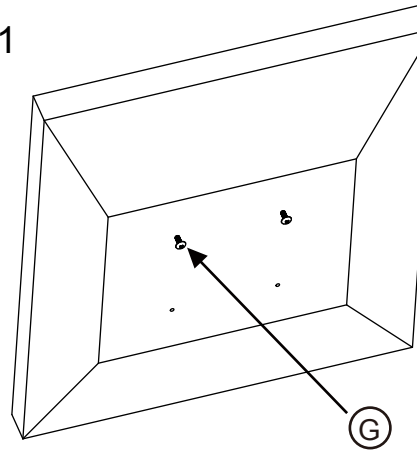


2



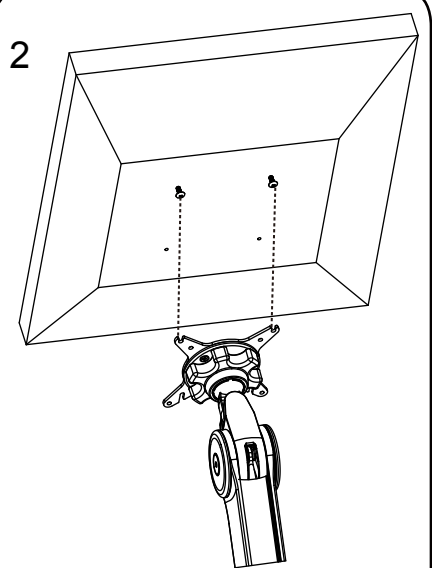
Step 5: Installing Monitor

1



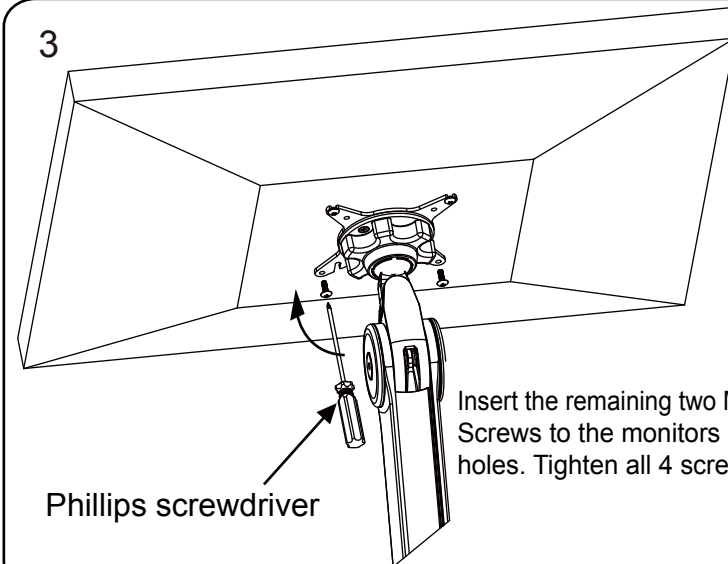
Insert two Monitor Mounting Screws half way into the monitors TOP VESA holes.

2



Allow monitor to mate and rest with monitor hub slots.

3



Insert the remaining two Monitor Mounting Screws to the monitors bottom VESA holes. Tighten all 4 screws.

Phillips screwdriver