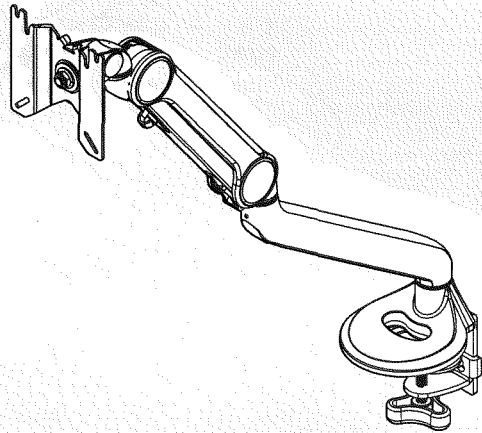


User Manual



**CLAMP SCREWS ARE RATED AT 83" LBS OF TORQUE.
PLEASE USE ALLEN WRENCH PROVIDED IN HARDWARE PACK
TO FASTEN SCREWS SNUG FOR INSTALLATION.**

● In accordance with our policy of constant improvement, we reserve the right to alter specifications of products shown.

1801C

20230706 (E-M)

Before assembly please spend some time reading this and follow the procedures step by step. Some panels are viewed differently from the detail drawing below. This is for extra clarity. Do not discard any of the packaging until you have checked all the parts and tools. If you are missing any of the parts, please contact your supplier.

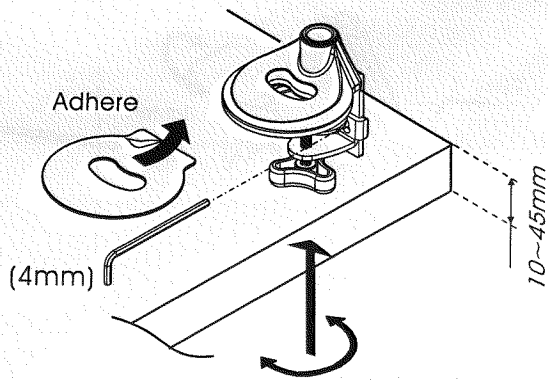
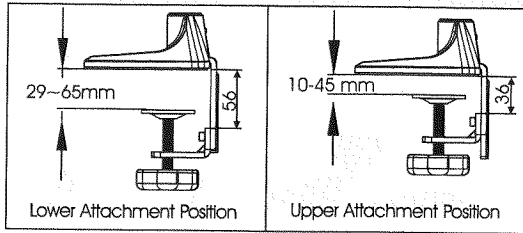
Parts and Tools Check List

01		X1	03		X1			
02		X1	04		X1			
05		X1	10		X1	15		M4*8 X1
06		X1	11		X4	16		(3mm) X1
07		X1	12		(5mm) X1			
08		X1	13		(4mm) X1			
09		X2	14		(2mm) X1			

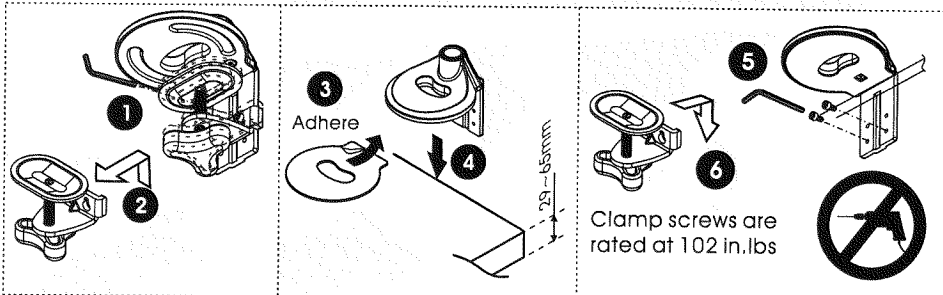
Assembly Guide

Step 1 "Clamp" Assembly

Adhere the pad to the base of the clamp.
Fits desk thicknesses 10~65mm, then clamp
the base to the desk.

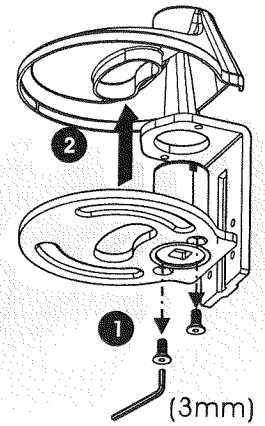
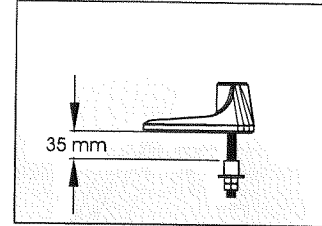


Lower Attachment Position

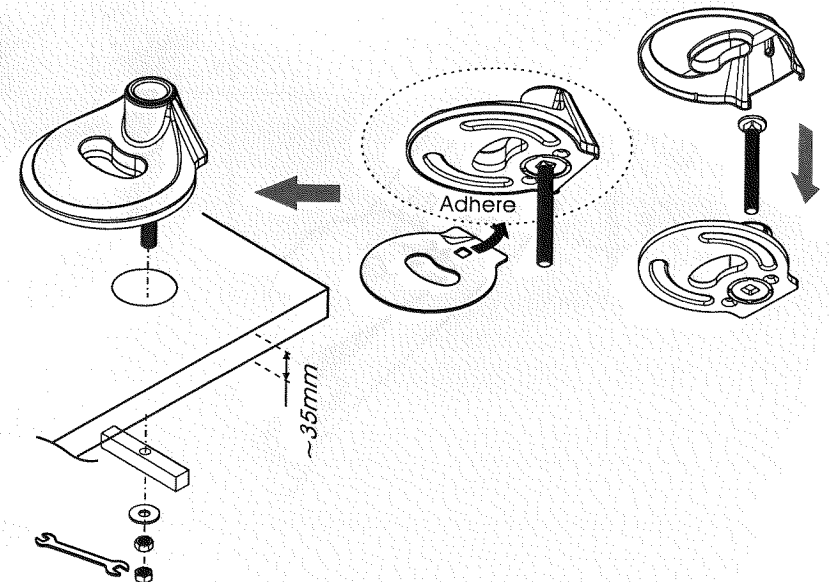


"Grommet" assembly step(1-1)

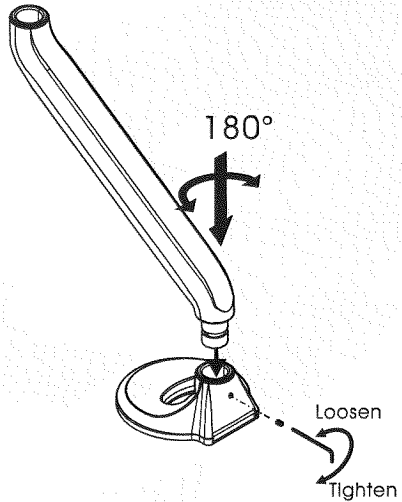
Use 3mm Allen Key to loosen the 2 screws,
then detach clamp mount and base cover.



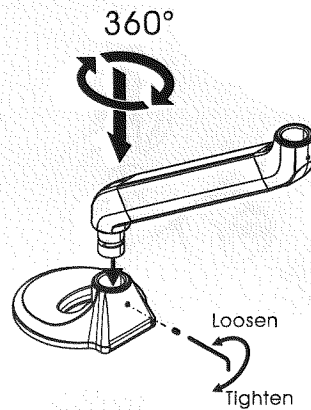
"Grommet" assembly step(1-2)



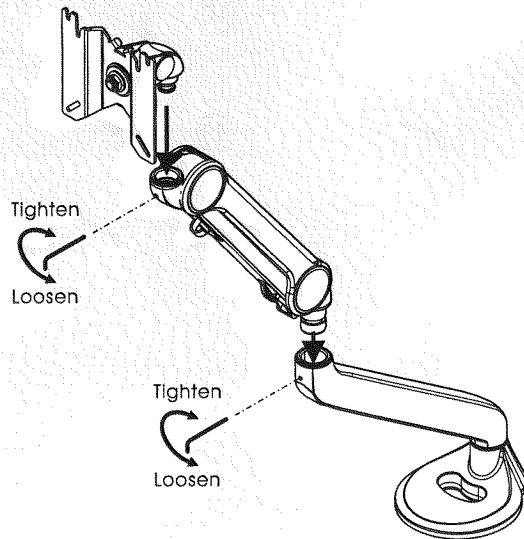
To achieve **180°** Lock-Out function:
Fully tighten the screw to the base with 2mm Allen Key, then back out one full turn.



To achieve **360°** Lock-Out function:
Turn the arm to the opposite side of the base, and fully tighten the screw to the base with 2mm Allen Key, then back out one full turn.

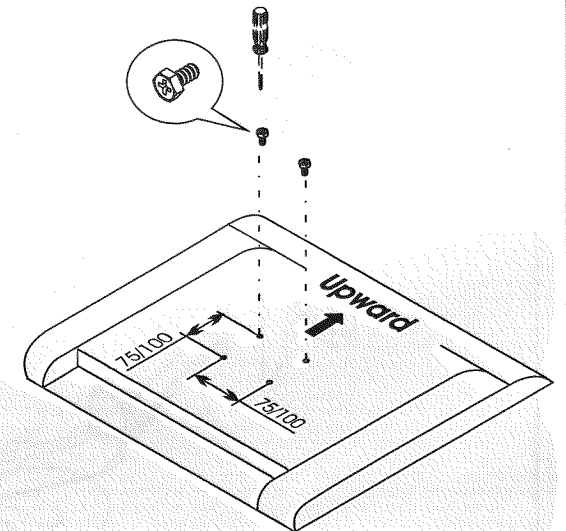
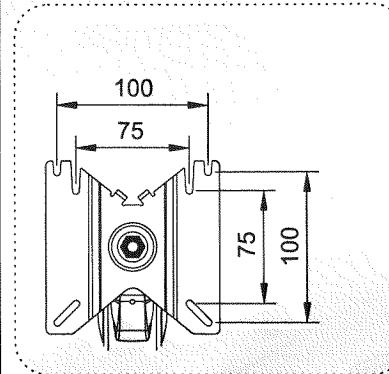


Fasten the screw to the bottom with 2mm Allen Key and then move backward one circle.



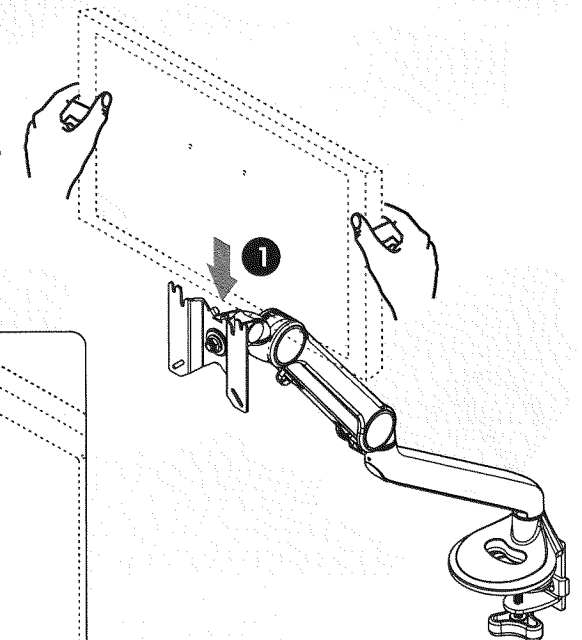
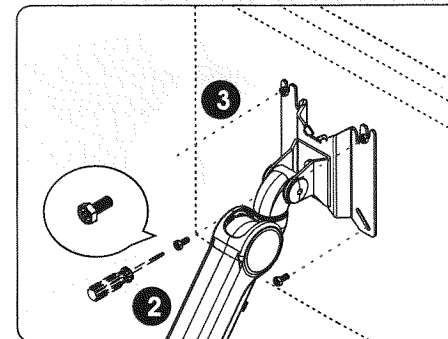
Step 3

Attach the screws (Do not fully tighten) to the top two holes on the back of the monitor.



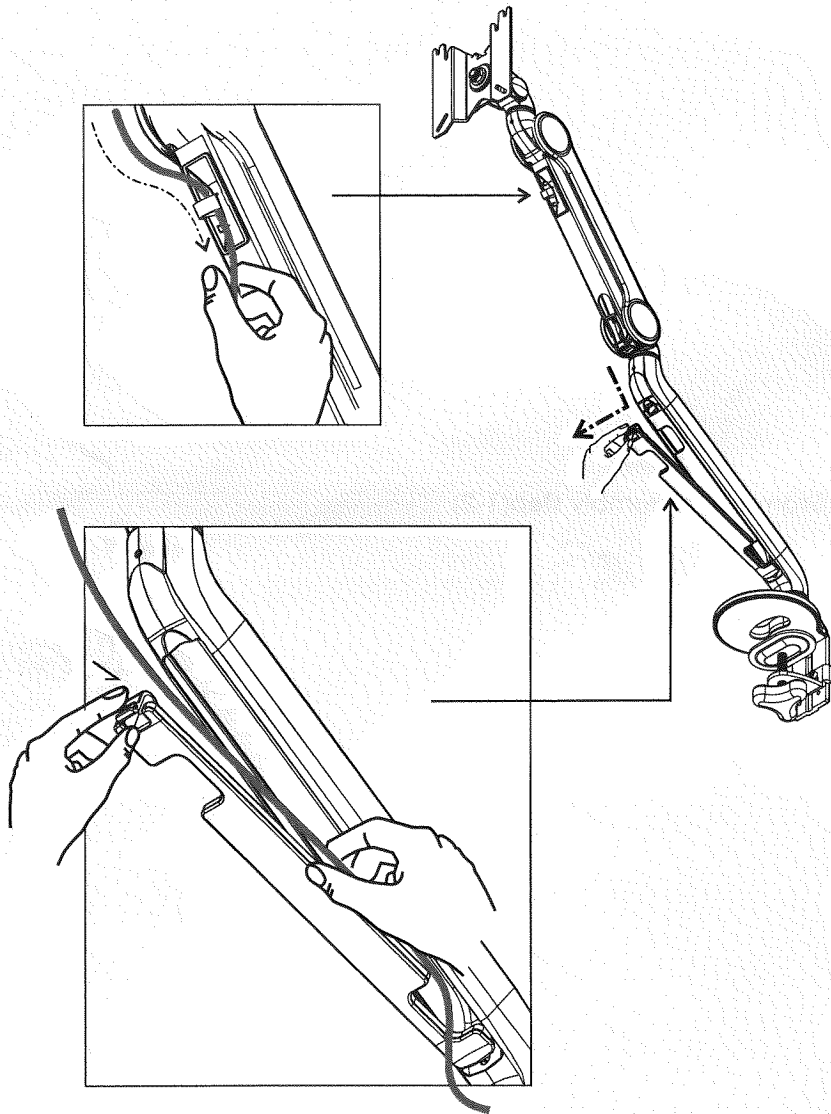
Step 4

Hook the monitor onto the VESA mount. Tightly install screws into the bottom two holes, then tighten the top two screws.



Step 5

Cable management



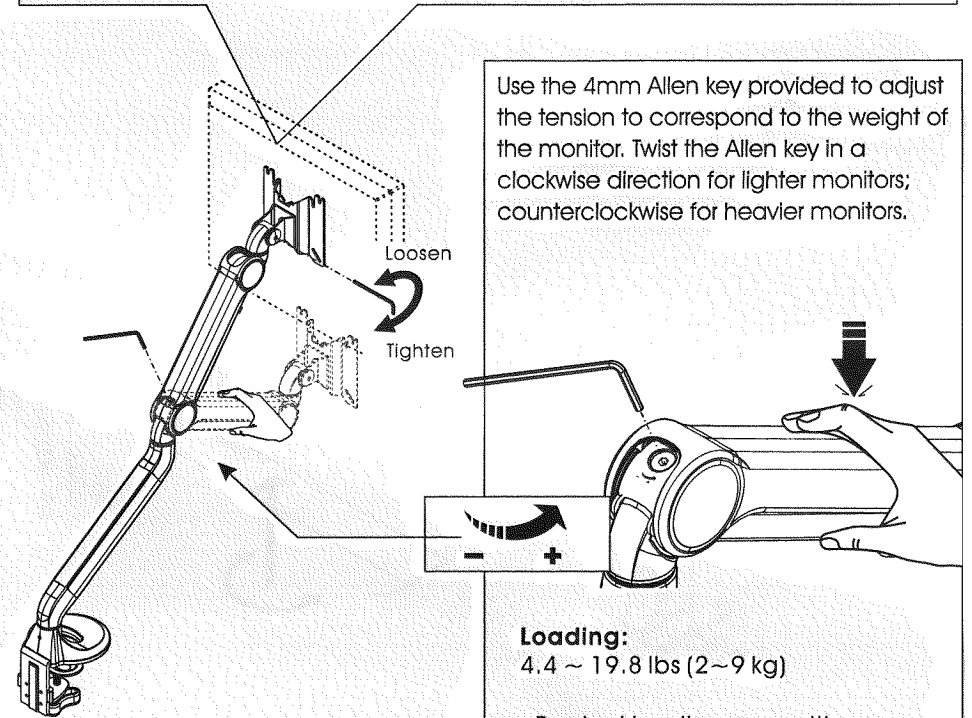
Tension Adjustment

Caution:

Support arm while adjusting tension.

Adjustment:

Use the 5mm Allen key provided to adjust the tension to correspond to the weight of the monitor. Twist the Allen key in a clockwise direction for heavier monitors; counterclockwise for lighter monitors.



Use the 4mm Allen key provided to adjust the tension to correspond to the weight of the monitor. Twist the Allen key in a clockwise direction for lighter monitors; counterclockwise for heavier monitors.

Loading:

4.4 ~ 19.8 lbs (2~9 kg)

- Product loading capacities are based on monitors' center of gravity less than 3cm (1 3/16") from the end of the VESA interface.
- Loading capacity could be reduced if monitor size is greater than 26" or depth is greater than 5.5cm (2 1/64").
- All product specifications in catalogs are subject to change without notice.