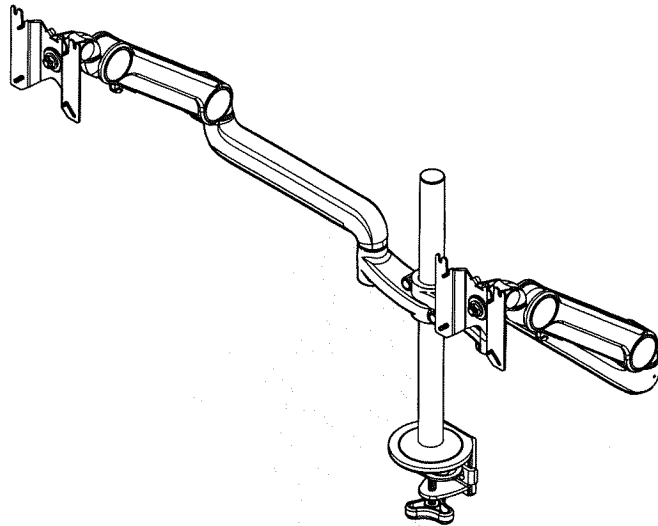


User Manual



**CLAMP SCREWS ARE RATED AT 83" LBS OF TORQUE.
PLEASE USE ALLEN WRENCH PROVIDED IN HARDWARE PACK
TO FASTEN SCREWS SNUG FOR INSTALLATION.**

● In accordance with our policy of constant improvement, we reserve the right to alter specifications of products shown.

1805-2

20191021 (E-M)

Before assembly please spend some time reading this and follow the procedures step by step. Some panels are viewed differently from the detail drawing below. This is for extra clarity. Do not discard any of the packaging until you have checked all the parts and tools. If you are missing any of the parts, please contact your supplier .

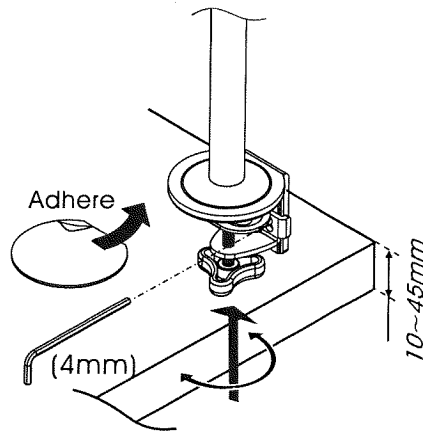
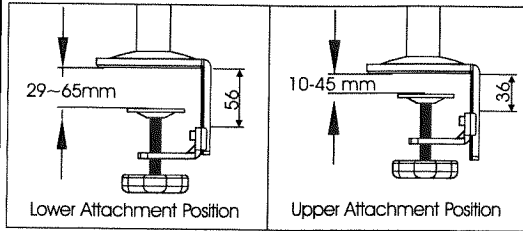
Parts and Tools Check List

01		X2	03		X2
02		X1	04		X1 Set
05		X1	08		X1
06		X8	09		X1
07		X2	10		X1
			11		X2
			12		X2

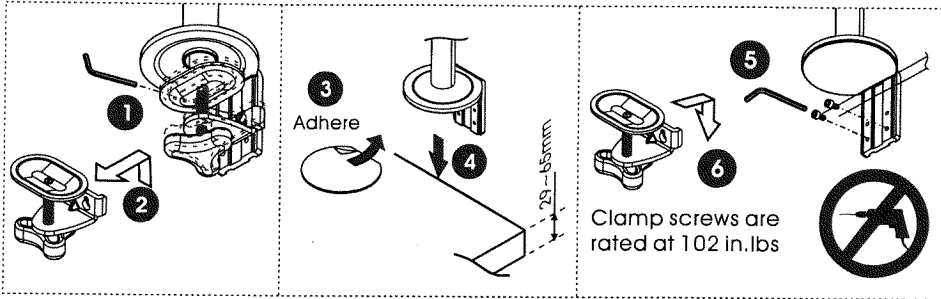
Assembly Guide

Step 1

Adhere the pad to the base of the clamp.
Fits desk thicknesses 10~65mm, then clamp the base to the desk.



Lower Attachment Position

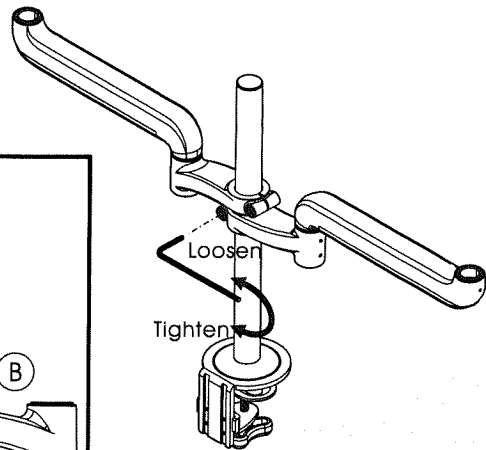
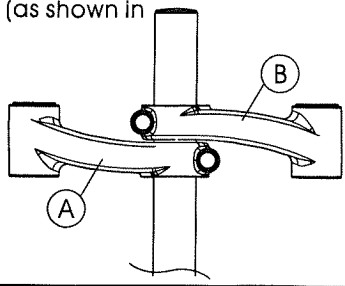


Step 2

Insert the arm into the pole. Use the allen key to tighten screw.

Notice:

To set up dual monitors in horizontal view, flip the arm upside down to align two mounting arms (as shown in the figure).

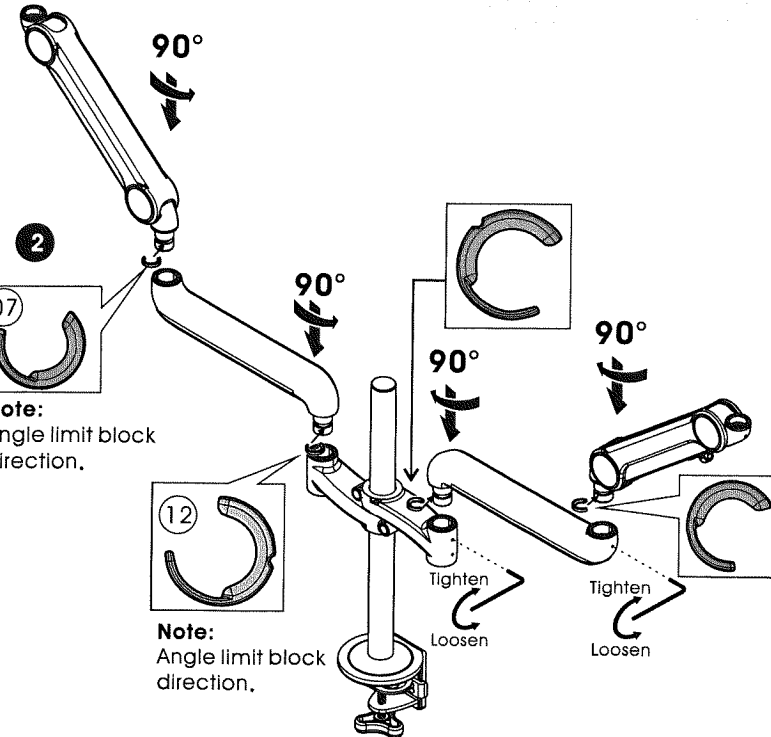
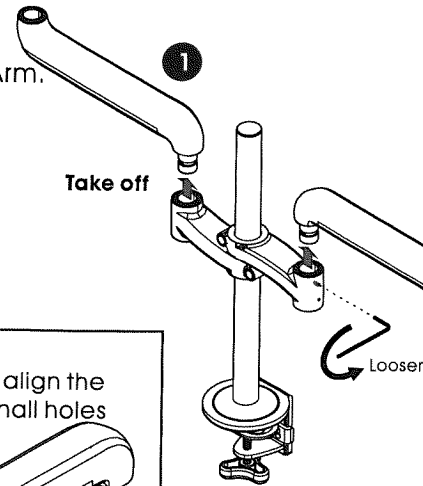
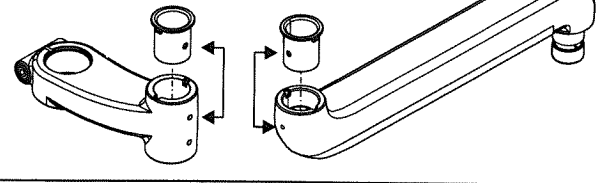


Step 3 90° Lockout Feature:

- 1 Loosen the screw and take off the Arm.
- 2 Mounting angle limit block. Fasten the screw to the bottom with 2mm Allen Key and then move backward one circle to have the limited 90° rotation if necessary.

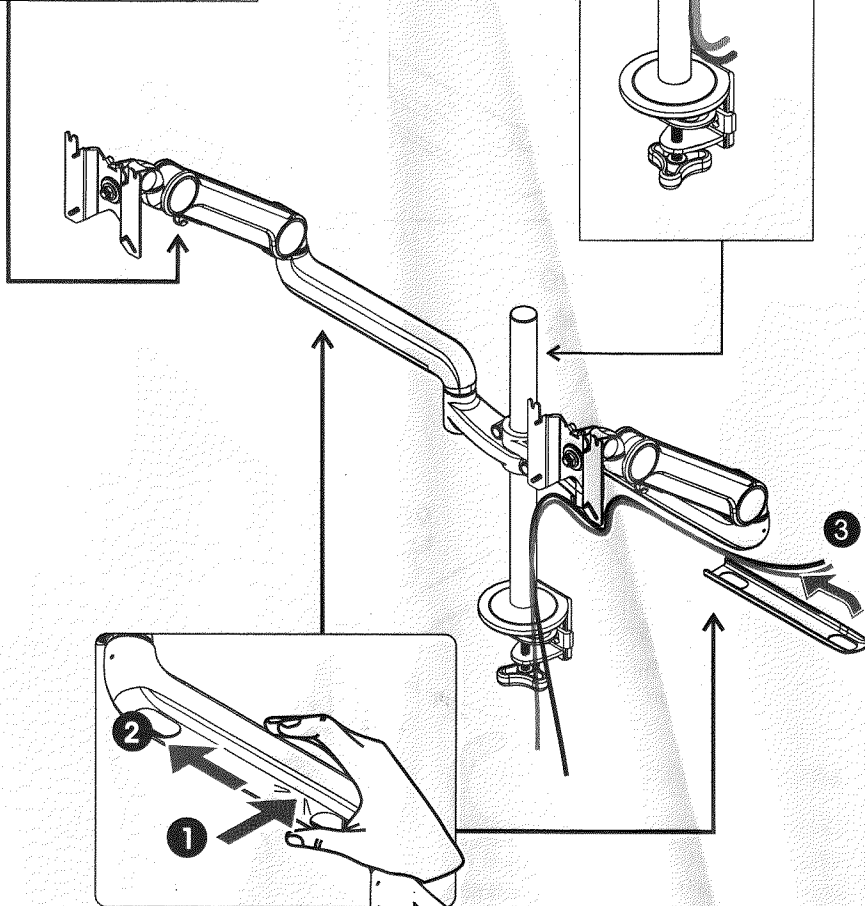
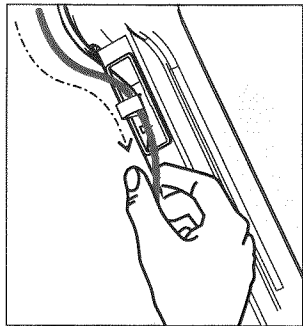
Notice:

Before tightening the screws, be sure to align the holes on the plastic bushings with the small holes on the arms.



Step 7

Cable management



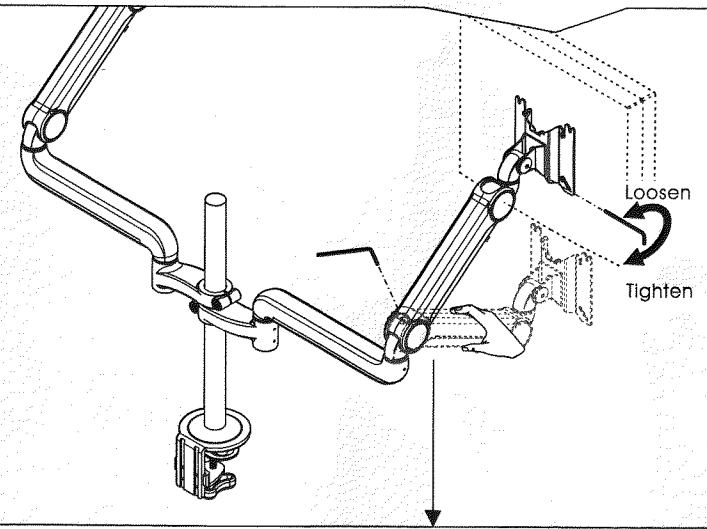
Tension Adjustment

Caution:

Support arm while adjusting tension.

Adjustment:

Use the 5mm Allen key provided to adjust the tension to correspond to the weight of the monitor. Twist the Allen key in a clockwise direction for heavier monitors; counterclockwise for lighter monitors.

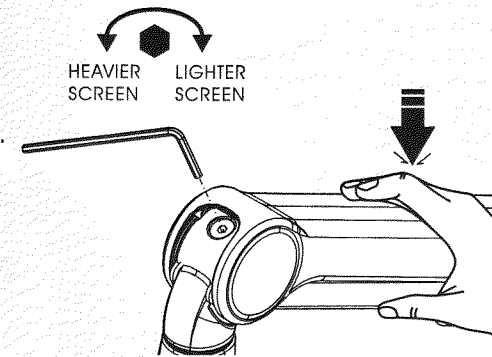


Use the 4mm Allen key provided to adjust the tension to correspond to the weight of the monitor. Twist the Allen key in a clockwise direction for lighter monitors; counterclockwise for heavier monitors.

Loading: (Single Arm)

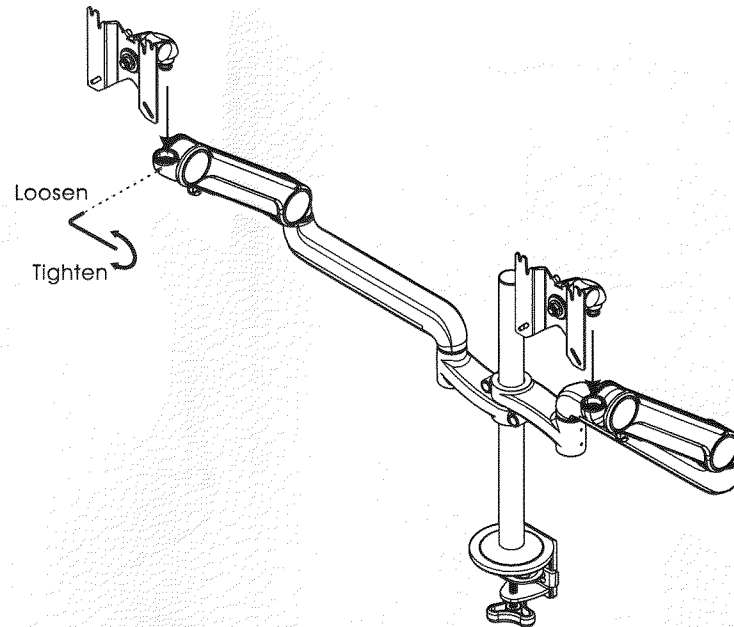
4.4 ~ 19.8 lbs (2~9 kg)

- Product loading capacities are based on monitors' center of gravity less than 3cm (1 3/16") from the end of the VESA interface.
- Loading capacity could be reduced if monitor size is greater than 26" or depth is greater than 5.5cm (2 11/64").
- All product specifications in catalogs are subject to change without notice.



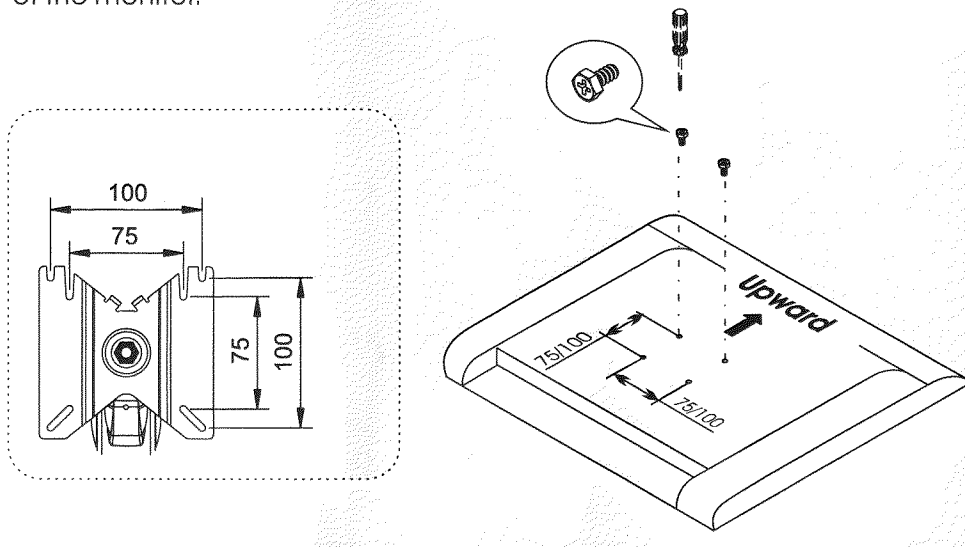
Step 4

Fasten the screw to the bottom with 2mm Allen Key and then move backward one circle.



Step 5

Attach the screws (Do not fully tighten) to the top two holes on the back of the monitor.



Step 6

Hook the monitor onto the VESA mount. Tightly Install screws into the bottom two holes, then tighten the top two screws.

