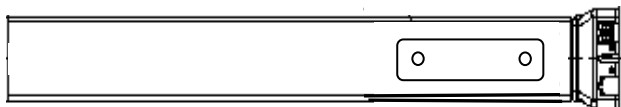


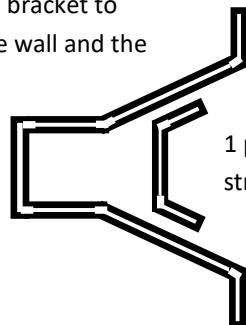
L3 MedWall Assembly

MedWall Parts: Direct Wall Mount

(1) pc. Lifting column actuator

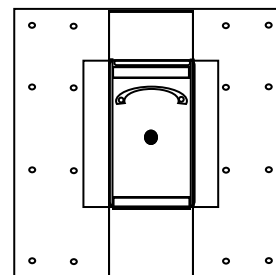


(1) 2-piece V bracket to mount to the wall and the



1 pc- V bracket support to strengthen the larger bracket

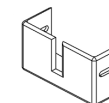
(1) pc. S2 swivel/sliding mount



(1) pc. Control switch

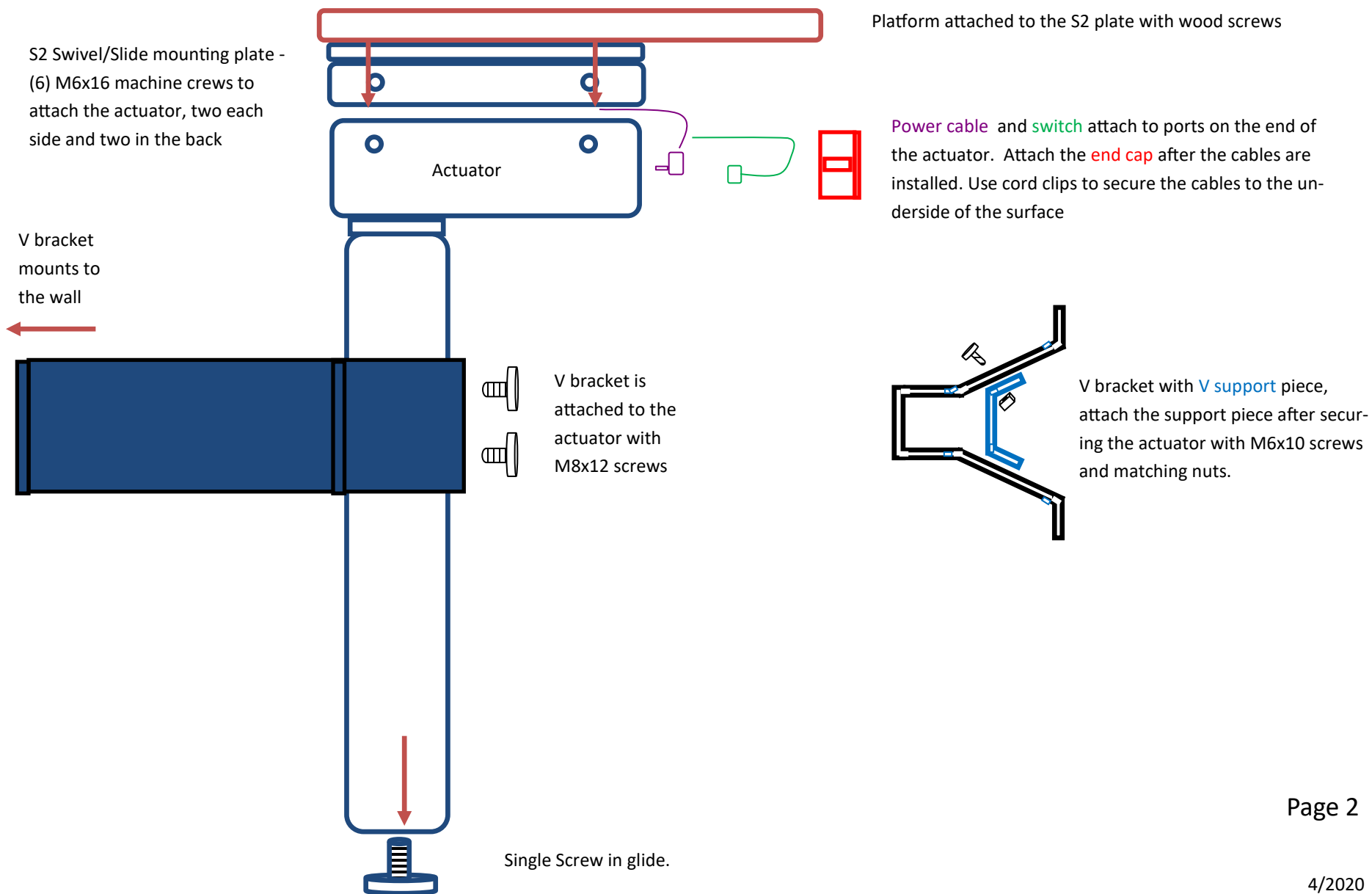


(1) pc. End Cap

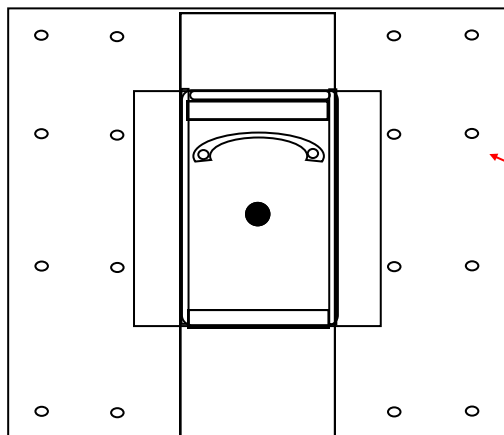


Hardware:

- (2) **M8x12** Large pan head stainless screws to mount the actuator to the V bracket
- (10) **M6x16** stainless pan head screws to mount the actuator to the top plate and the foot
- (4) **M6x10** stainless pan head screws and self set nuts to secure the V bracket support to the V bracket
- (16) **black wood screws** to screw the surface to the top mounting plate
- (5) **silver screws** to secure the control switch to the work surface and to secure the cord clips
- (3) black **cord clips**



MedWall S2 swivel/slide Mounting Plate



11.5" x11.5" mounting plate mounts to the underside of the work surface.

The swivel is limited to 45 degrees with the set screw in the arc slot inside the leg actuator housing.

Before installing the swivel plate to the leg actuator, decide which direction the surface will swivel. By placing the set screw (M6x10M Pan) in the left hole when the S2 plate is in the position as the drawing, the surface will swivel counter clockwise. Place it on the right hole for clockwise swivel.

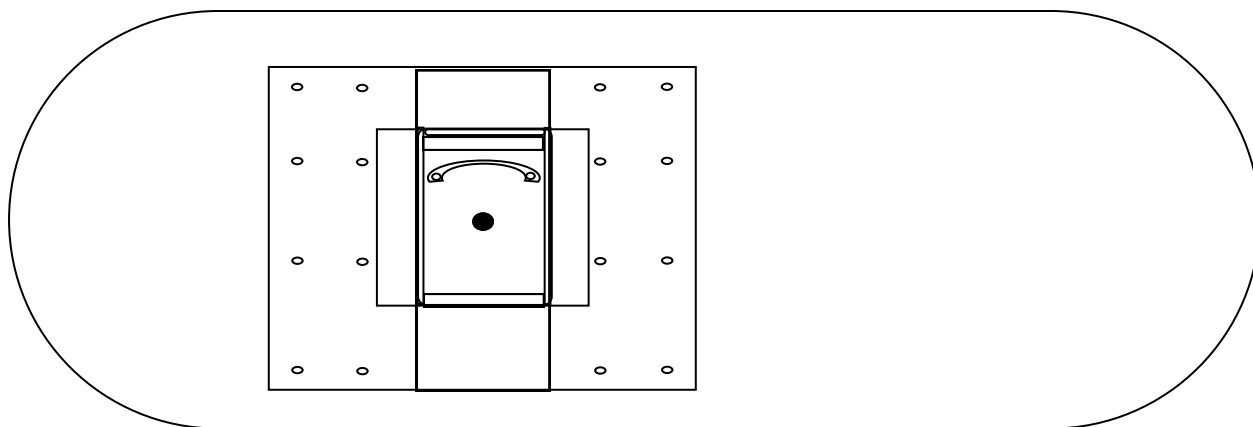
The sliding carriage will mount to the leg actuator with (6) M6x16 pan head screws , 2 on the left and right side and 2 in the back.

Mounting the standard surface to swivel and clear the wall:

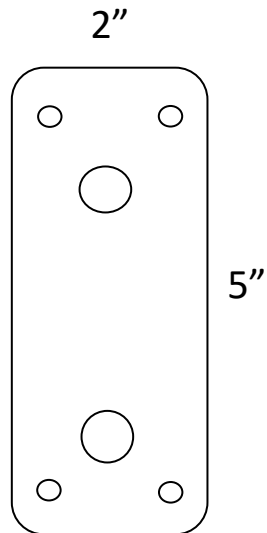
Position the S2 mounting plate in the center of the surface top to bottom and

- A) 6.5" in from the edge that will be next to the wall when swiveling perpendicular from the wall when using the wall brace and cleats, or
- B) 5.5" when securing it directly to the wall.

Screw down the S2 plate to the surface with the black wood screws.



Wall mount brace and wall cleats



The 2"x5" cleats will be mounted to the wall into the studs with the four outside holes and the flat side facing the wall. The strut will be installed on the large threaded holes. The bottom of the cleat should be 14.5" from the floor. Two per set.

The wall brace is designed for studs 18" on center. The horizontal slots will allow for left to right placement of the med wall unit. Secure the MedWall assembly to the wall strut first before securing the wall brace to the cleats. Use (4) M6x20 pan head screws with washers and nuts with the set washers. Two per side. **See page 7 if a CPU holder is being install with a wall strut.**

The vertical slotted holes will allow for leveling of the Med Wall unit. With two per side use the (4) M6x20 pan head screws to secure the wall brace to the cleats. Level the surface before final tightening of the assembly.

