

ACE15R

for Lab and other Specialized Applications



The ACE15R Arm, mounted above the user, has all of the travel in the downward direction. The user has the ability to put the monitor in the optimal position. The arm supports the weight load with “one way friction lock technology”.

The elevated armature mounting position keeps it from interfering with the work area and eliminates the risk of knocking into equipment (vials, pipettes, microscopes) or liquids.



Traditional Armatures are installed on or close to the worksurface which takes up valuable space and interferes with equipment and work tasks.





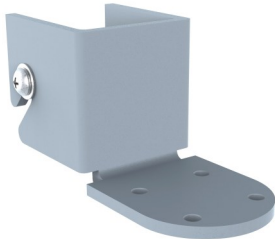
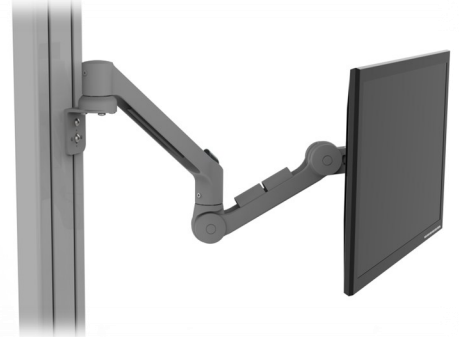
Lab and Work Bench Mounting

GSI offers universal brackets to install an ACE15R to various Uprights



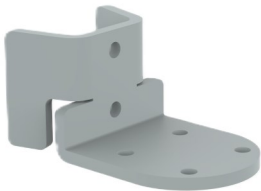
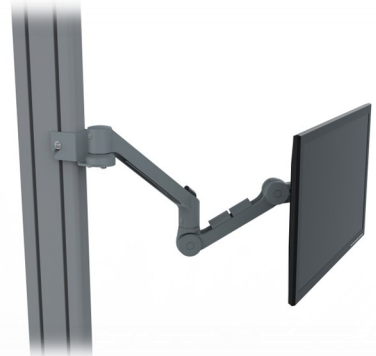
TS-BKT—Channel Mount

This Bracket mounts with T-slot nuts. The nut is front loaded into the channel, turns 90 degrees as the bolt is tightened and locks in place.



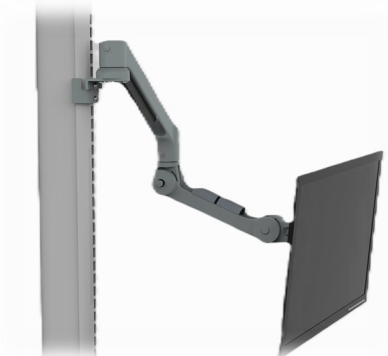
KA-BKT—Dual Channel Mount

This Bracket is U-shaped with a 1 3/4" ID opening. T-slot nuts mount into the side channels.



KE-BKT—Radius Channel Mount

This Bracket is winged to mount to radius uprights. The slot nuts are made to fit into a slot 0.52" x 0.29" max.



LS-BKT—Large Slotted Mount

This Bracket fits uprights with slots 1/4" W, 2" on center.



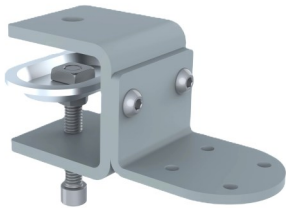


Lab and Work Bench Mounting cont.



UB-BKT—Bolt and Plate Mount

This Bracket fits square or rectangle uprights up to 2 3/4" wide. The depth of the upright (please specify) is accommodated by the length of the bolts.



SC-BKT—SHELF Mount

This Bracket can be clamped to shelves 1" - 1-1/2" thick.



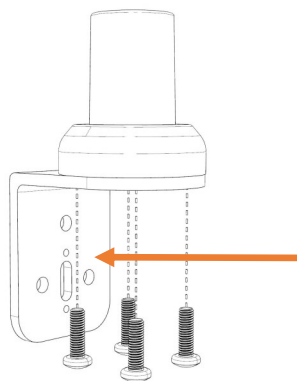
UPRIGHT BRACKET MOUNTING ORIENTATIONS

Both the **“TS” L-Bracket** and **“UB” L-Bracket** are designed to provide installation options.

They can be mounted with the post either above the bracket (standard mount) or the bracket is turned over and the post mounts to the inside of the bracket (low profile).

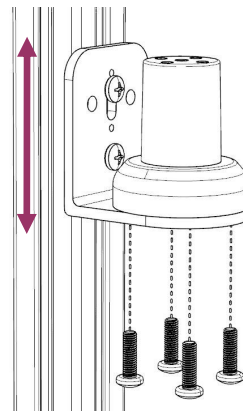
The standard mount has easier access but a bigger footprint.

The low profile mount is compact for limited space uprights but the post has to be removed to access the mounting hardware.

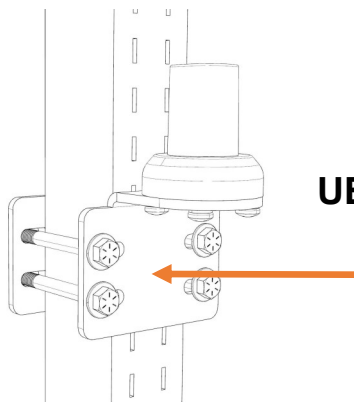


TS-BKT

Standard
EASY ACCESS



LOW PROFILE



UB-BKT

